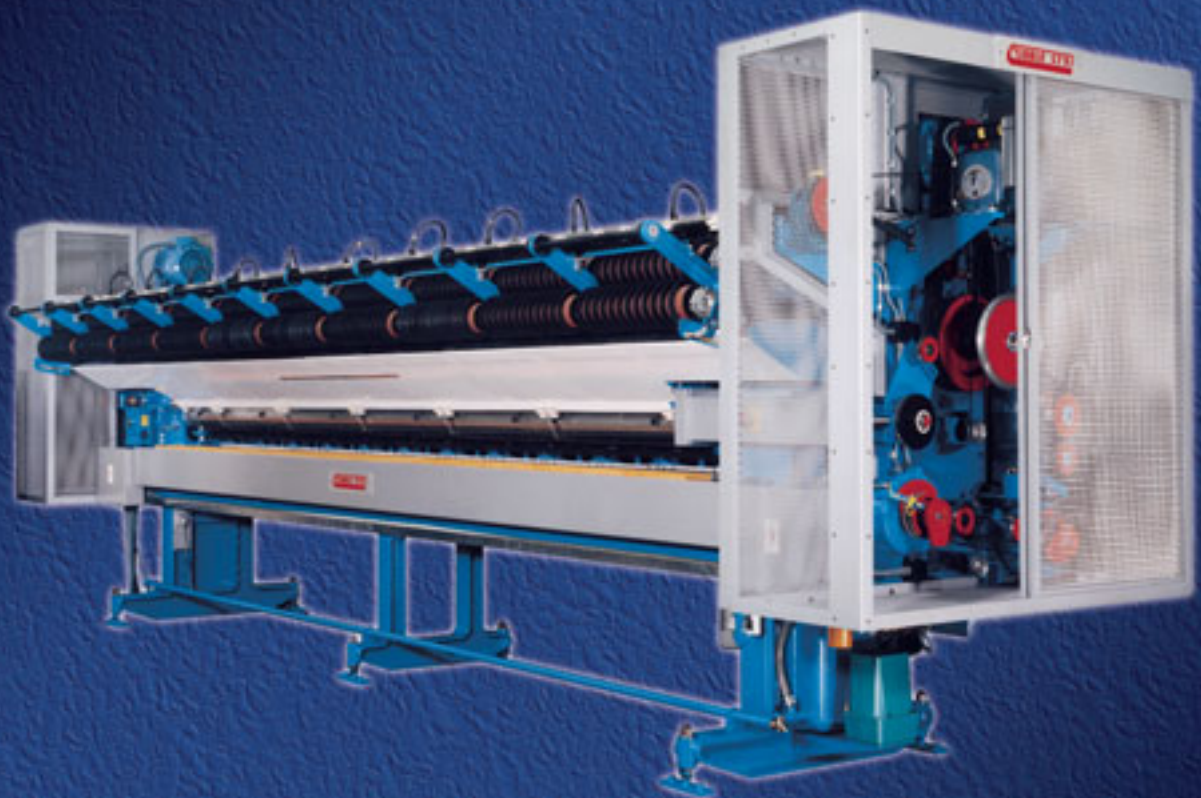


# LPIII Low Profile Scroll

- Well proven machine for a popular design range
- Excellent operator access to scroll
- Ease of maintenance and maximum reliability

Low Profile Scroll



### Improved Operational Access

The LPIII offers excellent accessibility to the scroll itself, for all rollers are in a single row and accessible to an operator standing in front of the machine. Access to the top housing of the tufting machines is totally unimpaired, so the unit is therefore compatible with any type of machine.

A totally machine mounted unit, which is compact, allowing access to all areas of the yarn path without the need for step-ladders. Simplification of yarn threading is achieved by combining "odd and even" rollers on to a single full width row, with odd and even rollers separated side to side of the machine for simpler creeling.

### Maintenance

**Simplification** - This is achieved by the separation of clutch module shafts from the yarn feed roller shaft. It is therefore possible to remove electrical parts for maintenance swiftly without disturbing the yarn path.

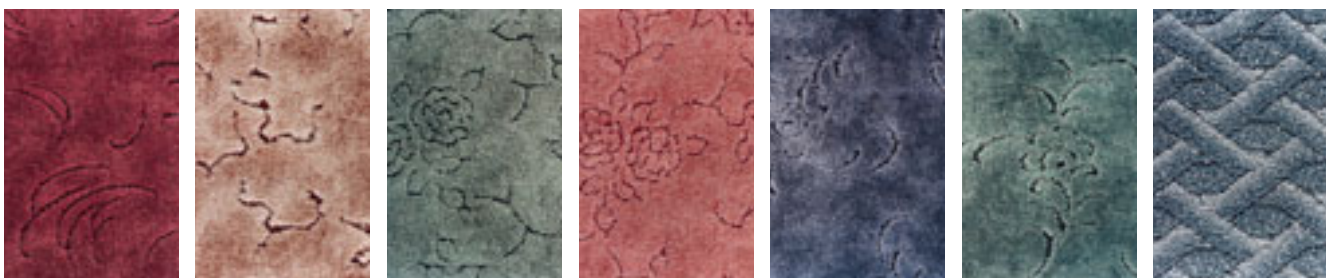
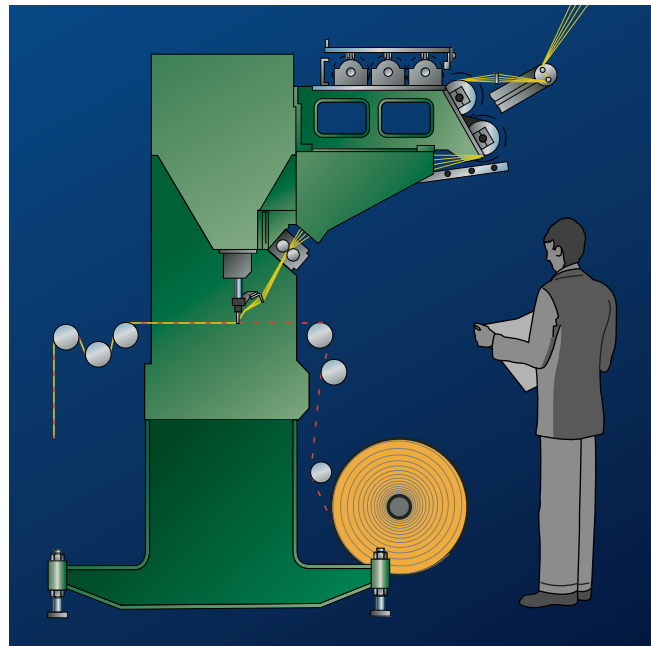
**Reduction** - The (rf) rotating field clutch design and the absence of bearings eliminates clutch bearing problems, a major source of scroll down time, keeping maintenance to an absolute minimum.

The slip ring and brush gear feeding the clutch is extremely robust, with duplicated brushes to each clutch, ensuring maximum life and reliability.

**Reduce Down Time** - Clutch modules are separated from the yarn feed rollers, so a clutch module can be removed simply by raising the hinged brush carriage plate and removing the split bearing cap at each end of the module.

A spare module is provided and brushes duplicated to each clutch, further reducing down time.

The yarn feed roller modules carry only the rollers and no mechanism requiring maintenance. They are easily removed due to split cap mounting.



#### Cobble Blackburn Limited

Gate Street  
Blackburn  
BB1 3AH  
England  
Tel +44 (0)1254 55121  
Fax +44 (0)1254 671125  
E-mail [Info@cobble.co.uk](mailto:Info@cobble.co.uk)  
Internet [www.cobble.co.uk](http://www.cobble.co.uk)

#### Cobble Gauge Parts Division

14 Norman Road  
Oswaldtwistle  
Accrington  
BB5 4NF  
England  
Tel +44 (0)1254 398498  
Fax +44 (0)1254 399969

#### Wilson & Longbottom Limited

Wentworth Industrial Park  
Tankersley  
Barnsley  
S75 3DH  
South Yorkshire  
England  
Tel +44 (0)1254 55121  
Fax +44 (0)1254 55121

#### Cobble in Benelux Stef Oliviers

Lintsesteenweg 325  
2540 Hove  
Belgium  
Tel +32 3 454 44 35  
Fax +32 3 454 4257

#### Cobble in Germany F W Schedwill

Ernst-Wiechart-Weg 7  
41068 Monchengladbach  
Germany  
Tel +49 2161 9519610  
Fax +49 2161 9519615

#### Spencer Wright Industries, Inc. Corporate Office

900 Tallan Building  
Two Union Square  
Chattanooga  
Tennessee 37402  
USA

#### Cobble Tufting machine Co., Inc

Plant No.3  
1731 Kimberley Park Drive  
Dalton  
Georgia  
Tel +1 706 278 1857  
Fax +1 706 277 4491

Plant No.4  
1731 Kimberley Park Drive  
Dalton  
Georgia

Tel +1 706 278 1857  
Fax +1 706 277 4491

